



NGTL/FH Daily Operating Plan – CSV File

NGTL/FH Daily Operating Plan – CSV File

Column definitions

Outage Id	Table	Start	End	Capability	Typical Flow	Location	Description
13034443	USJR	13-Feb-18	14-Feb-18	275000		Potential IT/FT Receipt Restriction; USJR;	Swartz Creek - Compressor Station Maintenance
13014689	USJR	22-May-18	1-Jun-18	265000		Partial FT Receipt Restriction; USJR;	NPS 42 Grande Prairie Mainline Loop - Pipeline Maintenance
13015513	USJR	15-Jun-18	17-Jun-18	287000		Zero IT Receipt Restriction; USJR; Segment 17 and partial 18	Hussar A and B - Compressor Station Maintenance
13199845	LCLR	23-Jan-18	1-Feb-18	0	200	Calling Lake, Calling Lake East, Corrigal Lake	NPS 10 Flat Lake Lateral Extension - Pipeline Modifications
13201702	LCLR	31-Jan-18	7-Feb-18	0	100	Hylo, Tweedie	NPS 8 Hylo Lateral - Pipeline Maintenance
13034582	WGAT	30-Jan-18	30-Jan-18	60000		Potential FT Delivery Restriction; Alberta/BC Border; Segments 22 and partial 21	Winchell Lake - Compressor Station Maintenance
13014689	WGAT	20-May-18	1-Jun-18	67000		Zero IT Delivery Restriction; Alberta/BC Border; Segments 22 and partial 21;	NPS 42 Grande Prairie Mainline Loop - Pipeline Maintenance
13034443	EGAT	13-Feb-18	14-Feb-18	133000		Potential IT Delivery Restriction; Empress/McNeill Borders; Segments 15, 16, 17, 18, 19, 20, 23, partial 21, and partial 28;	Swartz Creek - Compressor Station Maintenance
13014685	EGAT	21-Feb-18	27-Feb-18	78000		Potential IT Delivery Restriction; OSDA	NPS 30 Leismer Kettle River Crossover - Pipeline Maintenance
12843248	EGAT	26-Mar-18	30-Mar-18	133000		Zero IT Delivery Restriction; Empress/McNeill Borders; Segments 10, 11, 12, 13, 14, 15, 16, 17, 18, 19, 20, 23, partial 21, and partial 28;	Meikle River D - Compressor Station Maintenance
13015497	EGAT	28-May-18	31-May-18	110000		Potential IT Delivery Restriction; NEDA	Dusty Lake - Compressor Station Maintenance
13020572	EGAT	11-Jun-18	11-Jun-18	128000		Potential IT Delivery Restriction; Empress/McNeill Borders; Segments 15, 16, 17, 18, 19, 20, 23, partial 21, and partial 28;	NPS 34 Eastern Alberta System Mainline - Pipeline Maintenance
13014700	EGAT	2-Jun-18	13-Jun-18	116000		Zero IT Delivery Restriction; Empress/McNeill Borders; Segments 15, 16, 17, 18, 19, 20, 23, partial 21, and partial 28;	NPS 48 Edson Mainline Loop 3 - Pipeline Maintenance
12926152	EGAT	10-Jun-18	17-Jun-18	116000		Potential IT Delivery Restriction; Empress/McNeill Borders; Segments 15, 16, 17, 18, 19, 20, 23, partial 21, and partial 28	Berland River # 2 - Compressor Station Maintenance
13015513	EGAT	15-Jun-18	17-Jun-18	122000		Partial FT Delivery Restriction; Empress/McNeill Borders; Segments 15, 16, 19, 20, 23, partial 18, and partial 28;	Hussar A and B - Compressor Station Maintenance

Outage ID:

Event specific identifier (will be the same if there are multiple areas impacted for a single outage event)

Table:

Table for which the outage is listed on the HTML report

Outage Start and End date:

Estimated timeframe of restriction

Capability:

Capability for the area listed in the 'Location' column

Location Column:

[Type of Restriction]; [Area for which the capability is stated]; [Other restricted segments];

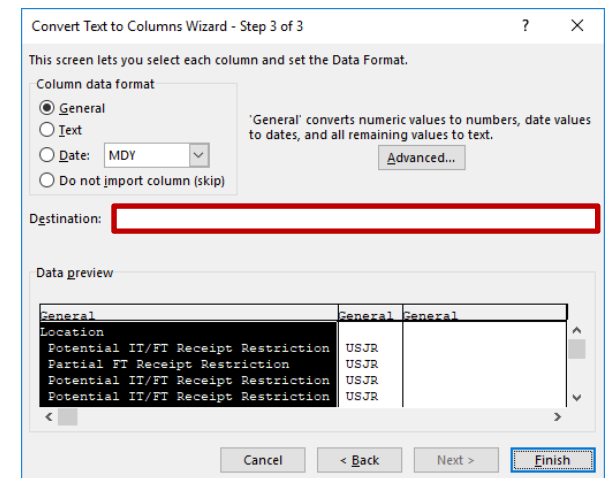
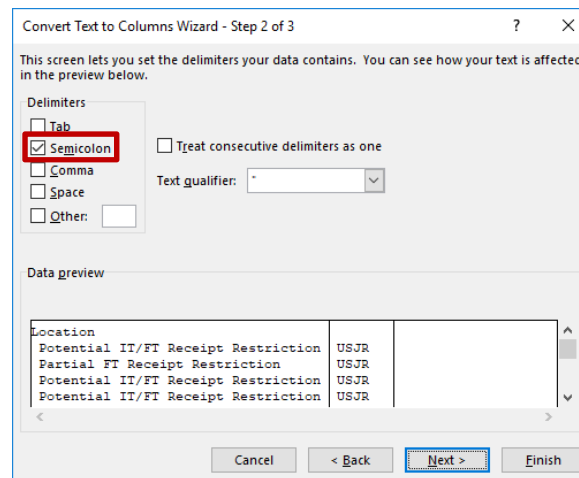
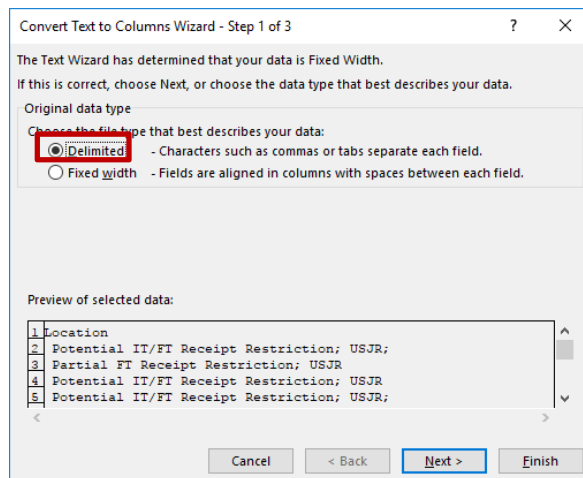
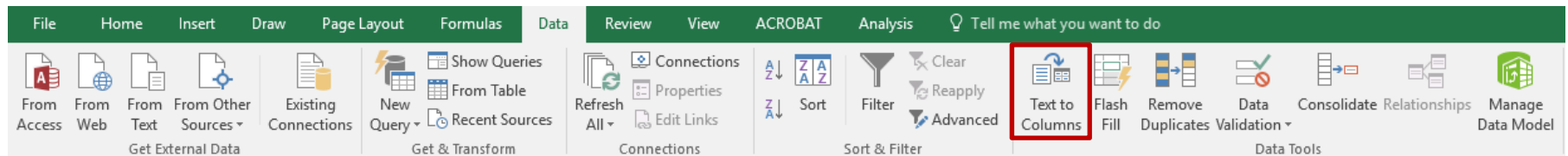
Description Column:

[Facility Name] – [Facility Type] [Maintenance/Modification]

NGTL/FH Daily Operating Plan – CSV File

Separating text into columns

Information in a single column can be split into multiple columns using the ‘Text to Column’ tool:



NGTL/FH Daily Operating Plan – CSV File

Separating text into columns

Outage Id	Table	Start	End	Capability	Typical Flow	Location	Description
12843248	WGAT	26-Mar-18	30-Mar-18	62000		Zero IT Delivery Restriction; Alberta/BC Border; Segments 22 and partial 21;	Meikle River D - Compressor Station Maintenance
13019318	WGAT	2-Apr-18	11-Apr-18	69000		Potential IT Delivery Restriction; Alberta/BC Border; Segments 22 and partial 21;	NPS 36 Western Alberta System Mainline - Pipeline Maintenance
13014697	WGAT	15-Apr-18	20-Apr-18	69000		Potential IT Delivery Restriction; Alberta/BC Border; Segments 22 and partial 21;	Vetchland # 1 - Compressor Station Maintenance
12926134	WGAT	29-Apr-18	4-May-18	69000		Potential IT Delivery Restriction; Alberta/BC Border; Segments 22 and partial 21;	Wolf Lake - Compressor Station Maintenance
13015507	WGAT	30-Apr-18	4-May-18	64000		Partial FT Delivery Restriction; Alberta/BC Border; Segments 22 and partial 21	Winchell Lake - Compressor Station Maintenance
13014957	WGAT	30-Apr-18	13-May-18	69000		Potential IT Delivery Restriction; Alberta/BC Borders; Segments 22 and partial 21;	NPS 36 Grande Prairie Mainline - Pipeline Maintenance
13014711	WGAT	15-May-18	17-May-18	61000		Partial FT Delivery Restriction; Alberta/BC Border; Segments 22 and partial 21	Turner Valley - Compressor Station Maintenance
13014689	WGAT	20-May-18	1-Jun-18	69000		Zero IT Delivery Restriction; Alberta/BC Border; Segments 22 and partial 21;	NPS 42 Grande Prairie Mainline Loop - Pipeline Maintenance
13025451	WGAT	23-May-18	2-Jun-18	66000		Potential FT Delivery Restriction; Alberta/BC Border; Segments 22 and partial 21	NPS 36 Western Alberta System Mainline - Pipeline Maintenance
13014700	WGAT	2-Jun-18	13-Jun-18	69000		Zero IT Delivery Restriction; Alberta/BC Border; Segments 22 and partial 21;	NPS 48 Edson Mainline Loop 3 - Pipeline Maintenance
13014959	WGAT	4-Jun-18	12-Jun-18	66000		Potential FT Delivery Restriction; Alberta/BC Border; Segments 22 and partial 21	NPS 42 Western Alberta System Mainline Loop - Pipeline Maintenance
12926152	WGAT	10-Jun-18	17-Jun-18	69000		Potential IT Delivery Restriction; Alberta/BC Border; Segments 22 and partial 21	Berland River # 2 - Compressor Station Maintenance
12926156	WGAT	18-Jun-18	24-Jun-18	69000		Potential IT Delivery Restriction; Alberta/BC Border; Segments 22 and partial 21	Berland River # 1 - Compressor Station Maintenance
13018824	WGAT	10-Jul-18	10-Jul-18	69000		Potential IT Delivery Restriction; Alberta/BC Border; Segments 22 and partial 21;	Clearwater - Compressor Station Maintenance
13018828	WGAT	15-Jul-18	20-Jul-18	69000		Potential IT Delivery Restriction; Alberta/BC Border; Segments 22 and partial 21;	Clearwater # 1 - Compressor Station Maintenance
13018825	WGAT	16-Jul-18	19-Jul-18	62000		Partial FT Delivery Restriction; Alberta/BC Border; Segments 22 and partial 21	Burton Creek - Compressor Station Maintenance
13028815	WGAT	17-Sep-18	21-Sep-18	69000		Potential IT Delivery Restriction; Alberta/BC Border; Segments 22 and partial 21;	Vetchland # 2 - Compressor Station Maintenance

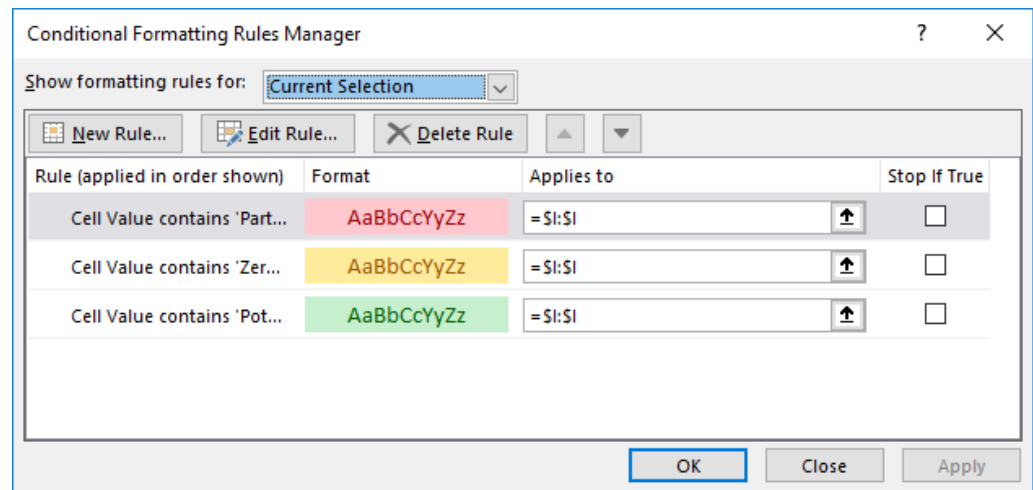
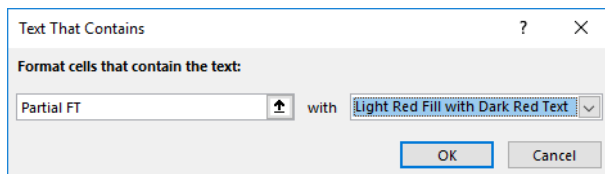
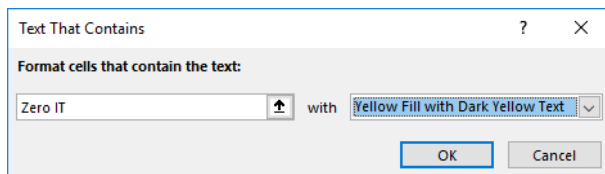
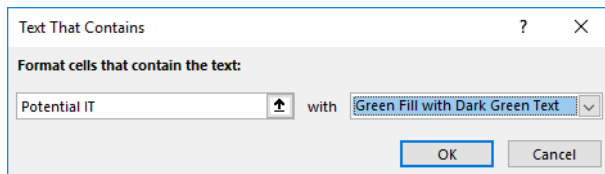
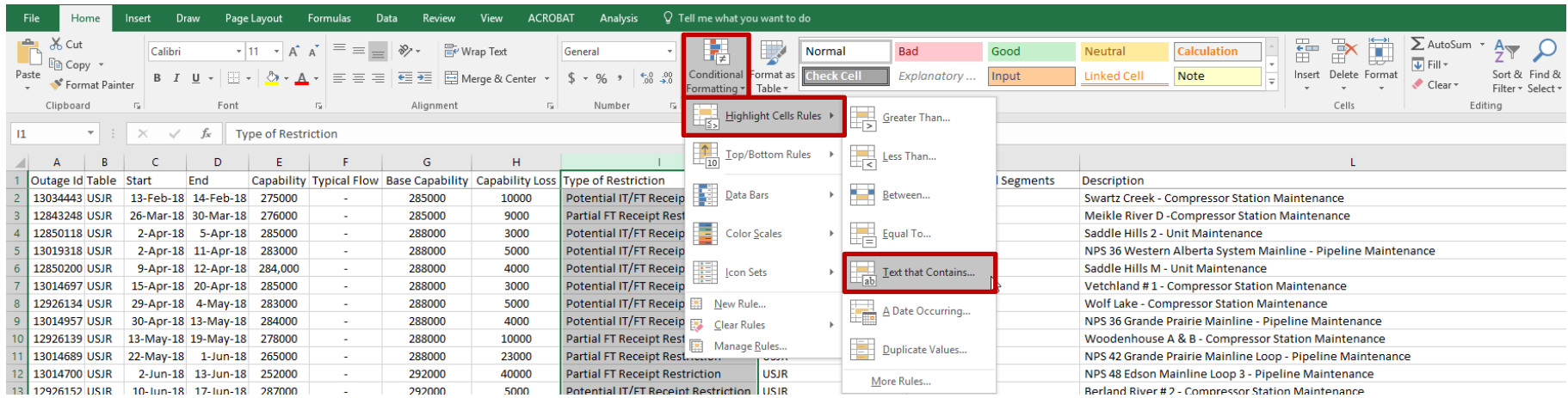


Outage Id	Table	Start	End	Capability	Typical Flow	Type of Restriction	Area for Stated Capability	Other Restricted Segments	Description
12843248	WGAT	26-Mar-18	30-Mar-18	62000		Zero IT Delivery Restriction	Alberta/BC Border	Segments 22 and partial 21	Meikle River D - Compressor Station Maintenance
13019318	WGAT	2-Apr-18	11-Apr-18	69000		Potential IT Delivery Restriction	Alberta/BC Border	Segments 22 and partial 21	NPS 36 Western Alberta System Mainline - Pipeline Maintenance
13014697	WGAT	15-Apr-18	20-Apr-18	69000		Potential IT Delivery Restriction	Alberta/BC Border	Segments 22 and partial 21	Vetchland # 1 - Compressor Station Maintenance
12926134	WGAT	29-Apr-18	4-May-18	69000		Potential IT Delivery Restriction	Alberta/BC Border	Segments 22 and partial 21	Wolf Lake - Compressor Station Maintenance
13015507	WGAT	30-Apr-18	4-May-18	64000		Partial FT Delivery Restriction	Alberta/BC Border	Segments 22 and partial 21	Winchell Lake - Compressor Station Maintenance
13014957	WGAT	30-Apr-18	13-May-18	69000		Potential IT Delivery Restriction	Alberta/BC Border	Segments 22 and partial 21	NPS 36 Grande Prairie Mainline - Pipeline Maintenance
13014711	WGAT	15-May-18	17-May-18	61000		Partial FT Delivery Restriction	Alberta/BC Border	Segments 22 and partial 21	Turner Valley - Compressor Station Maintenance
13014689	WGAT	20-May-18	1-Jun-18	69000		Zero IT Delivery Restriction	Alberta/BC Border	Segments 22 and partial 21	NPS 42 Grande Prairie Mainline Loop - Pipeline Maintenance
13025451	WGAT	23-May-18	2-Jun-18	66000		Potential FT Delivery Restriction	Alberta/BC Border	Segments 22 and partial 21	NPS 36 Western Alberta System Mainline - Pipeline Maintenance
13014700	WGAT	2-Jun-18	13-Jun-18	69000		Zero IT Delivery Restriction	Alberta/BC Border	Segments 22 and partial 21	NPS 48 Edson Mainline Loop 3 - Pipeline Maintenance
13014959	WGAT	4-Jun-18	12-Jun-18	66000		Potential FT Delivery Restriction	Alberta/BC Border	Segments 22 and partial 21	NPS 42 Western Alberta System Mainline Loop - Pipeline Maintenance
12926152	WGAT	10-Jun-18	17-Jun-18	69000		Potential IT Delivery Restriction	Alberta/BC Border	Segments 22 and partial 21	Berland River # 2 - Compressor Station Maintenance
12926156	WGAT	18-Jun-18	24-Jun-18	69000		Potential IT Delivery Restriction	Alberta/BC Border	Segments 22 and partial 21	Berland River # 1 - Compressor Station Maintenance
13018824	WGAT	10-Jul-18	10-Jul-18	69000		Potential IT Delivery Restriction	Alberta/BC Border	Segments 22 and partial 21	Clearwater - Compressor Station Maintenance
13018828	WGAT	15-Jul-18	20-Jul-18	69000		Potential IT Delivery Restriction	Alberta/BC Border	Segments 22 and partial 21	Clearwater # 1 - Compressor Station Maintenance
13018825	WGAT	16-Jul-18	19-Jul-18	62000		Partial FT Delivery Restriction	Alberta/BC Border	Segments 22 and partial 21	Burton Creek - Compressor Station Maintenance
13028815	WGAT	17-Sep-18	21-Sep-18	69000		Potential IT Delivery Restriction	Alberta/BC Border	Segments 22 and partial 21	Vetchland # 2 - Compressor Station Maintenance

NGTL/FH Daily Operating Plan – CSV File

Highlighting High Risk Outages

High risk outage events can be highlighted using 'Conditional Formatting':



NGTL/FH Daily Operating Plan – CSV File

Highlighting high risk outages

Outage Id	Table	Start	End	Capability	Typical Flow	Base Capability	Capability Loss	Type of Restriction	Area for Stated Capability	Other Restricted Segments	Description
13034443	USJR	13-Feb-18	14-Feb-18	275000	-	285000	10000	Potential IT/FT Receipt Restriction	USJR		Swartz Creek - Compressor Station Maintenance
12843248	USJR	26-Mar-18	30-Mar-18	276000	-	285000	9000	Partial FT Receipt Restriction	USJR		Meikle River D - Compressor Station Maintenance
12850118	USJR	2-Apr-18	5-Apr-18	285000	-	288000	3000	Potential IT/FT Receipt Restriction	USJR		Saddle Hills 2 - Unit Maintenance
13019318	USJR	2-Apr-18	11-Apr-18	283000	-	288000	5000	Potential IT/FT Receipt Restriction	USJR		NPS 36 Western Alberta System Mainline - Pipeline Maintenance
12850200	USJR	9-Apr-18	12-Apr-18	284,000	-	288000	4000	Potential IT/FT Receipt Restriction	USJR		Saddle Hills M - Unit Maintenance
13014697	USJR	15-Apr-18	20-Apr-18	285000	-	288000	3000	Potential IT/FT Receipt Restriction	USJR		Vetchland # 1 - Compressor Station Maintenance
12926134	USJR	29-Apr-18	4-May-18	283000	-	288000	5000	Potential IT/FT Receipt Restriction	USJR		Wolf Lake - Compressor Station Maintenance
13014957	USJR	30-Apr-18	13-May-18	284000	-	288000	4000	Potential IT/FT Receipt Restriction	USJR		NPS 36 Grande Prairie Mainline - Pipeline Maintenance
12926139	USJR	13-May-18	19-May-18	278000	-	288000	10000	Partial FT Receipt Restriction	USJR		Woodenhouse A & B - Compressor Station Maintenance
13014689	USJR	22-May-18	1-Jun-18	265000	-	288000	23000	Partial FT Receipt Restriction	USJR		NPS 42 Grande Prairie Mainline Loop - Pipeline Maintenance
13014700	USJR	2-Jun-18	13-Jun-18	252000	-	292000	40000	Partial FT Receipt Restriction	USJR		NPS 48 Edson Mainline Loop 3 - Pipeline Maintenance
12926152	USJR	10-Jun-18	17-Jun-18	287000	-	292000	5000	Potential IT/FT Receipt Restriction	USJR		Berland River # 2 - Compressor Station Maintenance
12926156	USJR	18-Jun-18	24-Jun-18	287000	-	292000	5000	Potential IT/FT Receipt Restriction	USJR		Berland River # 1 - Compressor Station Maintenance
12926157	USJR	24-Jun-18	29-Jun-18	287000	-	292000	5000	Potential IT/FT Receipt Restriction	USJR		Goodfish - Compressor Station Maintenance
13199845	LCLR	23-Jan-18	1-Feb-18	0	200	-	200	Calling Lake, Calling Lake East, Corral Lake			NPS 10 Flat Lake Lateral Extension - Pipeline Modifications
13201702	LCLR	31-Jan-18	7-Feb-18	0	100	-	100	Hyl0, Tweedie			NPS 8 Hyl0 Lateral - Pipeline Maintenance
13207932	LCLR	6-Feb-18	9-Feb-18	0	75	-	75	Bowell South, Bowell South #2			NPS 8 Bowell South Lateral - Pipeline Maintenance
12936749	LCLR	6-Feb-18	13-Feb-18	0	75	-	75	Clyden, North Thornbury			NPS 14 Leismer Lateral - Pipeline Modifications
12945372	LCLR	22-Feb-18	26-Feb-18	0	105	-	105	North Hangingstone			NPS 16 Pelican Mainline - Pipeline Modifications
12945371	LCLR	10-Apr-18	13-Apr-18	0	190	-	190	Wayne North			NPS 6 Wayne North Lateral - Pipeline Modifications
12948537	LCLR	13-May-18	17-May-18	0	2000	-	2000	Harmattan Elkton			Meter Station Maintenance
11819165	LCLR	12-Jun-18	15-Jun-18	0	120	-	120	Grizzly			NPS 12 Bigstone Lateral - Pipeline Maintenance
13034582	WGAT	30-Jan-18	30-Jan-18	60000	-	69000	9000	Potential FT Delivery Restriction	Alberta/BC Border	Segments 22 and partial 21	Winchell Lake - Compressor Station Maintenance
13034443	WGAT	13-Feb-18	14-Feb-18	62000	-	69000	7000	Potential IT Delivery Restriction	Alberta/BC Border	Segments 22 and partial 21	Swartz Creek - Compressor Station Maintenance
12843248	WGAT	26-Mar-18	30-Mar-18	62000	-	69000	7000	Zero IT Delivery Restriction	Alberta/BC Border	Segments 22 and partial 21	Meikle River D - Compressor Station Maintenance
13019318	WGAT	2-Apr-18	11-Apr-18	69000	-	73000	4000	Potential IT Delivery Restriction	Alberta/BC Border	Segments 22 and partial 21	NPS 36 Western Alberta System Mainline - Pipeline Maintenance
13014697	WGAT	15-Apr-18	20-Apr-18	69000	-	73000	4000	Potential IT Delivery Restriction	Alberta/BC Border	Segments 22 and partial 21	Vetchland # 1 - Compressor Station Maintenance
12926134	WGAT	29-Apr-18	4-May-18	69000	-	73000	4000	Potential IT Delivery Restriction	Alberta/BC Border	Segments 22 and partial 21	Wolf Lake - Compressor Station Maintenance
13015507	WGAT	30-Apr-18	4-May-18	64000	-	73000	9000	Partial FT Delivery Restriction	Alberta/BC Border	Segments 22 and partial 21	Winchell Lake - Compressor Station Maintenance
13014957	WGAT	30-Apr-18	13-May-18	69000	-	73000	4000	Potential IT Delivery Restriction	Alberta/BC Border	Segments 22 and partial 21	NPS 36 Grande Prairie Mainline - Pipeline Maintenance
13014711	WGAT	15-May-18	17-May-18	61000	-	73000	12000	Partial FT Delivery Restriction	Alberta/BC Border	Segments 22 and partial 21	Turner Valley - Compressor Station Maintenance
13014689	WGAT	20-May-18	1-Jun-18	69000	-	73000	4000	Zero IT Delivery Restriction	Alberta/BC Border	Segments 22 and partial 21	NPS 42 Grande Prairie Mainline Loop - Pipeline Maintenance
13025451	WGAT	23-May-18	2-Jun-18	66000	-	73000	7000	Potential FT Delivery Restriction	Alberta/BC Border	Segments 22 and partial 21	NPS 36 Western Alberta System Mainline - Pipeline Maintenance
13014700	WGAT	2-Jun-18	13-Jun-18	69000	-	73000	4000	Zero IT Delivery Restriction	Alberta/BC Border	Segments 22 and partial 21	NPS 48 Edson Mainline Loop 3 - Pipeline Maintenance
13014959	WGAT	4-Jun-18	12-Jun-18	66000	-	73000	7000	Potential FT Delivery Restriction	Alberta/BC Border	Segments 22 and partial 21	NPS 42 Western Alberta System Mainline Loop - Pipeline Maintenance
12926152	WGAT	10-Jun-18	17-Jun-18	69000	-	73000	4000	Potential IT Delivery Restriction	Alberta/BC Border	Segments 22 and partial 21	Berland River # 2 - Compressor Station Maintenance
12926156	WGAT	18-Jun-18	24-Jun-18	69000	-	73000	4000	Potential IT Delivery Restriction	Alberta/BC Border	Segments 22 and partial 21	Berland River # 1 - Compressor Station Maintenance

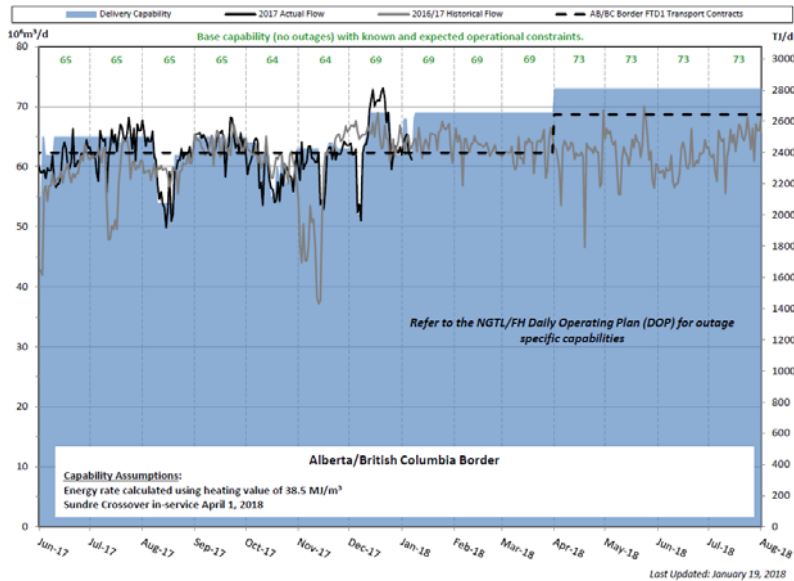
NGTL/FH Daily Operating Plan – CSV File

Determining Capability Loss

Outage Id	Table	Start	End	Capability	Typical Flow	Base Capability	Capability Loss	Type of Restriction	Area for Stated Capability	Other Restricted Segments	Description
12843248	WGAT	26-Mar-18	30-Mar-18	62000	-	69000	7000	Zero IT Delivery Restriction	Alberta/BC Border	Segments 22 and partial 21	Meikle River D - Compressor Station Maintenance
13019318	WGAT	2-Apr-18	11-Apr-18	69000	-	73000	4000	Potential IT Delivery Restriction	Alberta/BC Border	Segments 22 and partial 21	NPS 36 Western Alberta System Mainline - Pipeline Maintenance
13014697	WGAT	15-Apr-18	20-Apr-18	69000	-	73000	4000	Potential IT Delivery Restriction	Alberta/BC Border	Segments 22 and partial 21	Vetchland # 1 - Compressor Station Maintenance
12926134	WGAT	29-Apr-18	4-May-18	69000	-	73000	4000	Potential IT Delivery Restriction	Alberta/BC Border	Segments 22 and partial 21	Wolf Lake - Compressor Station Maintenance
13015507	WGAT	30-Apr-18	4-May-18	64000	-	73000	9000	Partial FT Delivery Restriction	Alberta/BC Border	Segments 22 and partial 21	Winchell Lake - Compressor Station Maintenance
13014957	WGAT	30-Apr-18	13-May-18	69000	-	73000	4000	Potential IT Delivery Restriction	Alberta/BC Border	Segments 22 and partial 21	NPS 36 Grande Prairie Mainline - Pipeline Maintenance
13014711	WGAT	15-May-18	17-May-18	61000	-	73000	12000	Partial FT Delivery Restriction	Alberta/BC Border	Segments 22 and partial 21	Turner Valley - Compressor Station Maintenance
13014689	WGAT	20-May-18	1-Jun-18	69000	-	73000	4000	Zero IT Delivery Restriction	Alberta/BC Border	Segments 22 and partial 21	NPS 42 Grande Prairie Mainline Loop - Pipeline Maintenance
13025451	WGAT	23-May-18	2-Jun-18	66000	-	73000	7000	Potential FT Delivery Restriction	Alberta/BC Border	Segments 22 and partial 21	NPS 36 Western Alberta System Mainline - Pipeline Maintenance
13014700	WGAT	2-Jun-18	13-Jun-18	69000	-	73000	4000	Zero IT Delivery Restriction	Alberta/BC Border	Segments 22 and partial 21	NPS 48 Edson Mainline Loop 3 - Pipeline Maintenance
13014959	WGAT	4-Jun-18	12-Jun-18	66000	-	73000	7000	Potential FT Delivery Restriction	Alberta/BC Border	Segments 22 and partial 21	NPS 42 Western Alberta System Mainline Loop - Pipeline Maintenance
12926152	WGAT	10-Jun-18	17-Jun-18	69000	-	73000	4000	Potential IT Delivery Restriction	Alberta/BC Border	Segments 22 and partial 21	Berland River # 2 - Compressor Station Maintenance
12926156	WGAT	18-Jun-18	24-Jun-18	69000	-	73000	4000	Potential IT Delivery Restriction	Alberta/BC Border	Segments 22 and partial 21	Berland River # 1 - Compressor Station Maintenance

$$\text{Capability Loss} = \text{Base Capability} - \text{Capability}$$

Capability and Historical Flow Charts



New Base Capability Table

	USJR	WGAT	FHZ8	EGAT	NEDA	OSDA	FHZ9
Jan-18	285	69	77				
Feb-18	285	69	77				
Mar-18	285	69	76				
Apr-18	288	73	75				
May-18	288	73	75				
Jun-18	292	73	75				
Jul-18	292	73	75				
Aug-18	292	73	75				
Sep-18	292	73	75				
Oct-18	292	73	75				
Nov-18	292	73	75				
Dec-18	292	73	75				

Coming Soon

NGTL/FH Daily Operating Plan – CSV File

Determining impacted areas for a single facility outage

To determine the impacted areas for a facility outage event, sort by ‘Outage ID’:

Outage Id Table	Start	End	Capability	Typical Flow	Base Capability	Capability Loss	Type of Restriction	Area for Stated Capability	Other Restricted Segments	Description
13014697 USJR	15-Apr-18	20-Apr-18	285000	-	288000	3000	Potential IT/FT Receipt Restriction	USJR		Vetchland # 1 - Compressor Station Maintenance
13014697 WGAT	15-Apr-18	20-Apr-18	69000	-	73000	4000	Potential IT Delivery Restriction	Alberta/BC Border	Segments 22 and partial 21	Vetchland # 1 - Compressor Station Maintenance
13014697 EGAT	15-Apr-18	20-Apr-18	124000	-	130000	6000	Potential IT Delivery Restriction	Empress/McNeill Borders	Segments 15, 16, 17, 18, 19, 20, 23, partial 21, and partial 28	Vetchland # 1 - Compressor Station Maintenance
12926134 USJR	29-Apr-18	4-May-18	283000	-	288000	5000	Potential IT/FT Receipt Restriction	USJR		Wolf Lake - Compressor Station Maintenance
12926134 WGAT	29-Apr-18	4-May-18	69000	-	73000	4000	Potential IT Delivery Restriction	Alberta/BC Border	Segments 22 and partial 21	Wolf Lake - Compressor Station Maintenance
12926134 EGAT	29-Apr-18	4-May-18	116000	-	129000	13000	Potential IT Delivery Restriction	Empress/McNeill Borders	Segments 15, 16, 17, 18, 19, 20, 23, partial 21, and partial 28	Wolf Lake - Compressor Station Maintenance
13014957 USJR	30-Apr-18	13-May-18	284000	-	288000	4000	Potential IT/FT Receipt Restriction	USJR		NPS 36 Grande Prairie Mainline - Pipeline Maintenance
13014957 WGAT	30-Apr-18	13-May-18	69000	-	73000	4000	Potential IT Delivery Restriction	Alberta/BC Border	Segments 22 and partial 21	NPS 36 Grande Prairie Mainline - Pipeline Maintenance
13014957 EGAT	30-Apr-18	13-May-18	116000	-	129000	13000	Potential IT Delivery Restriction	Empress/McNeill Borders	Segments 15, 16, 17, 18, 19, 20, 23, partial 21, and partial 28	NPS 36 Grande Prairie Mainline - Pipeline Maintenance
12926135 EGAT	8-May-18	11-May-18	78000	-	129000	51000	Potential IT Delivery Restriction	OSDA		Field Lake - Compressor Station Maintenance
12926139 USJR	13-May-18	19-May-18	278000	-	288000	10000	Partial FT Receipt Restriction	USJR		Woodenhouse A & B - Compressor Station Maintenance
12926139 EGAT	13-May-18	19-May-18	116000	-	129000	13000	Zero IT Delivery Restriction	Empress/McNeill Borders	Segments 10, 11, 12, 13, 14, 15, 16, 17, 18, 19, 20, 22, 23, partial 21, partial 28	Woodenhouse A & B - Compressor Station Maintenance
13014711 WGAT	15-May-18	17-May-18	61000	-	73000	12000	Partial FT Delivery Restriction	Alberta/BC Border	Segments 22 and partial 21	Turner Valley - Compressor Station Maintenance
13014689 WGAT	20-May-18	1-Jun-18	69000	-	73000	4000	Zero IT Delivery Restriction	Alberta/BC Border	Segments 22 and partial 21	NPS 42 Grande Prairie Mainline Loop - Pipeline Maintenance
13014689 EGAT	20-May-18	1-Jun-18	116000	-	129000	13000	Zero IT Delivery Restriction	Empress/McNeill Borders	Segments 15, 16, 17, 18, 19, 20, 23, partial 21, and partial 28	NPS 42 Grande Prairie Mainline Loop - Pipeline Maintenance
13014689 USJR	22-May-18	1-Jun-18	265000	-	288000	23000	Partial FT Receipt Restriction	USJR		NPS 42 Grande Prairie Mainline Loop - Pipeline Maintenance
13014690 EGAT	25-May-18	25-May-18	126000	-	129000	3000	Potential IT Delivery Restriction	Empress/McNeill Borders	Segments 18, 19, 20 and partial 21	Red Deer River - Compressor Station Maintenance
13014700 USJR	2-Jun-18	13-Jun-18	252000	-	292000	40000	Partial FT Receipt Restriction	USJR		NPS 48 Edson Mainline Loop 3 - Pipeline Maintenance
13014700 WGAT	2-Jun-18	13-Jun-18	69000	-	73000	4000	Zero IT Delivery Restriction	Alberta/BC Border	Segments 22 and partial 21	NPS 48 Edson Mainline Loop 3 - Pipeline Maintenance
13014700 EGAT	2-Jun-18	13-Jun-18	116000	-	130000	14000	Zero IT Delivery Restriction	Empress/McNeill Borders	Segments 15, 16, 17, 18, 19, 20, 23, partial 21, and partial 28	NPS 48 Edson Mainline Loop 3 - Pipeline Maintenance
12926152 USJR	10-Jun-18	17-Jun-18	287000	-	292000	5000	Potential IT/FT Receipt Restriction	USJR		Berland River # 2 - Compressor Station Maintenance
12926152 WGAT	10-Jun-18	17-Jun-18	69000	-	73000	4000	Potential IT Delivery Restriction	Alberta/BC Border	Segments 22 and partial 21	Berland River # 2 - Compressor Station Maintenance
12926152 EGAT	10-Jun-18	17-Jun-18	116000	-	130000	14000	Potential IT Delivery Restriction	Empress/McNeill Borders	Segments 15, 16, 17, 18, 19, 20, 23, partial 21, and partial 28	Berland River # 2 - Compressor Station Maintenance
12926156 USJR	18-Jun-18	24-Jun-18	287000	-	292000	5000	Potential IT/FT Receipt Restriction	USJR		Berland River # 1 - Compressor Station Maintenance
12926156 WGAT	18-Jun-18	24-Jun-18	69000	-	73000	4000	Potential IT Delivery Restriction	Alberta/BC Border	Segments 22 and partial 21	Berland River # 1 - Compressor Station Maintenance
12926156 EGAT	18-Jun-18	24-Jun-18	116000	-	130000	14000	Potential IT Delivery Restriction	Empress/McNeill Borders	Segments 15, 16, 17, 18, 19, 20, 23, partial 21, and partial 28	Berland River # 1 - Compressor Station Maintenance
12926157 USJR	24-Jun-18	29-Jun-18	287000	-	292000	5000	Potential IT/FT Receipt Restriction	USJR		Goodfish - Compressor Station Maintenance
12926157 EGAT	24-Jun-18	29-Jun-18	122000	-	130000	8000	Potential IT Delivery Restriction	Empress/McNeill Borders	Segments 10, 11, 12, 13, 14, 15, 16, 17, 18, 19, 20, 22, 23, partial 21, partial 28	Goodfish - Compressor Station Maintenance

Questions?

